

# CITIZEN

## Advance to the pole position

High speed printing with unique ease of use



**CT-S851II**  
(available in black or white)

### LCD display

The industry's first POS printer with LCD display for easy configuration and operation. Many set up options and coloured status or error messages.

### In a hurry?

With 300mm/sec. print speed the CT-S851II is the fastest POS printer in the market.

### Toolfree maintenance

Paper jam? No problem for the CT-S851II. One hand grip and the cutter is released automatically. No tool is needed. Even if the long-life cutter ever needs to be exchanged. Thanks to its Snap-In design this only takes 30 seconds.

### Internal Power Supply

The CT-S851II POS printer from Citizen offers an internal power supply.

## CITIZEN CT-S851II

POS

### Applications

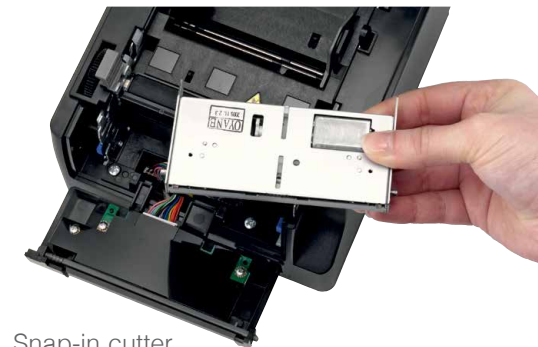
- Hospitality
- Receipt
- Coupon
- Ticket
- Restaurant / Bar
- Kitchen
- Delivery slip
- Barcode
- Weigh scales
- Kiosk
- Queue management



Online status



Error message with instruction



Snap-in cutter

# CITIZEN

## Specifications

Model	CT-S851II	
Printing method	Line thermal dot printing	
Printing width	280mm/640 dots, 72mm/576 dots, 64mm/512 dots, 54.5mm/436 dots, 54mm/432 dots, 52.5mm/420 dots, 48mm/384 dots, 45mm/360 dots, 48.75mm/390 dots, 68.25mm/546 dots	
Dot pitch	8 x 8 dots/mm (203 dpi)	
Printing speed	Max. 300mm/s (print density 100%), 2400 dot-lines/s	
Number of columns	83mm paper: Font A – 53, Font B – 71, Font C – 80, 80mm paper: Font A – 48, Font B – 64, Font C – 72, 60mm paper: Font A – 36, Font B – 48, Font C – 54, 58mm paper: Font A – 35, Font B – 46, Font C – 52	
Character size	Font A: 1.50 x 3.00mm (12 x 24 dots), Font B: 1.13 x 2.13mm (9 x 17 dots), Font C: 1.00 x 2.00mm (8 x 16 dots)	
Character table	Alphanumeric, international, PC437/850/852/857/858/860/863/864/865/866/WPC1252/katakana/Thai code 18	
Barcode type	UPC-A/E, JAN-13/8, Code 39, Code 128, CODABAR, Code 93, PDF417, QR Code	
Logo registration/print	384 KB (capable of storing user-defined characters and logos)	
Line spacing	4.23mm (1/6 inch), can be set by command	
Paper	Width	83mm/80mm/60mm/58mm (all +0/-1mm)
	Diameter	maximum 83mm
	Thickness	65-75µm (core tube diameter: inner 12mm/outer 18mm) 75-150µm (core tube diameter: inner 25.4mm/outer 32mm)
	Recommended Paper	TF-50KS-E-2D from Nippon Paper, PD150R or PD160R from Ohji Paper, PA220AG, HP220A, HP220AB-1, F230AA, P220AB, or PB670 (2-color paper) from Mitsubishi Paper
Interface	Serial (RS-232C compliant), parallel (IEEE 1284 compliant)), USB, USB with hub, Ethernet, Wireless LAN (Wifi), powered USB, Bluetooth	
Input buffer	4K bytes/45 bytes	
Drawer kick-out	2 drawers	
External device port	RJ-45, 8-pin connector	
Liquid crystal display (LCD)	128 x 32 dots STN liquid crystal, white/red LED backlight	
Power supply	Input: AC 100 to 240V, 50/60 Hz, 150 VA, Output: DC 24, 2.1 A	
Weight	CT-S851IIS: Approx. 2 kg, CT-S851IIA: Approx. 1.6 kg	
Dimensions (W x D x H)	CT-S851IIS: 145 x 192 x 148 mm, CT-S851IIA: 145 (W) x 192 (D) x 120 (H) mm	
Operating environment	5 to 45°C, 10 to 90% RH (no condensation)	
Storage environment	-20 to 60°C, 10 to 90% RH (no condensation)	
Reliability	Print head life: 150km, 200 million pulses (at normal temperature and humidity using recommended paper), Auto cutter life: 2 million cuts (at normal temperature/humidity, using recommended paper and paper thickness)	
EMC and safety standards	UL, C-UL, FCC Class A, TUV-Bauart, CE Marking, VCCI, CCC, BIS	
Warranty	2 years for Printer	

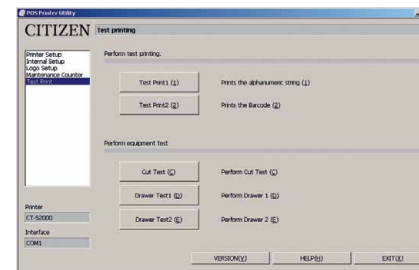
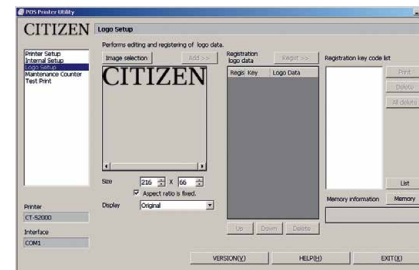
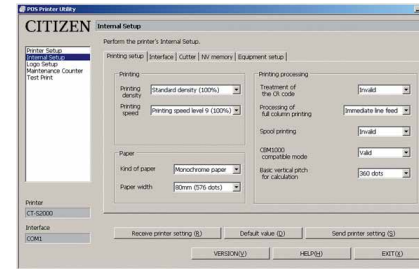
## Accessories/ Interface Connections

- Serial IF1-RS01
- Parallel IF1-PA01
- USB IF1-UB01
- Powered USB IF1-PU01
- USB incl. USB hub IF1-HU01
- Ethernet (Standard) IF1-ET01



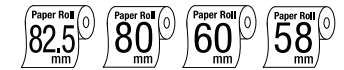
Exchangeable interfaces plus RJ-45 port

## Customization Software



# CITIZEN CT-S851II

POS



## Features & Benefits

- 300mm / sec high-speed printing
- 82,5/80/60/58 mm selectable paper width
- Easy paper loading
- Auto retracting Cutter (full/partial)
- Snap-in cutter
- LCD display
- Built-in buzzer
- Front paper exit
- Splash proof design
- Paper roll capacity Ø 83mm
- Exchangeable interface cards
- RJ-45 port
- Built-in AC adaptor
- Cash drawer kick-out
- Bitmap registration (NV memory)
- Barcode printing
- ESC/POST™/® compatibility
- Page mode
- Two color printing
- Smoothing fonts
- Available in white, black or dark grey (option)
- Driver: Win2000/XP/Vista/2003 Server, OPOS, Java POS, CUPS
- Utility software: Printer customization software, Receipt Layout Designer

All product names are trademarks of the respective manufacturers. Epson® and ESC/POST™® are trademarks or registered trademarks of Seiko Epson Corporation. Designs, specifications and availability are subject to change without notice. Errors and omissions excluded.

### Type Classification

CT-S851IIS 3 RS E BK P L M1  
1) 2) 3) 4) 5) 6) 7) 8) 9)

### 1) Model type

CT-S851II

### 2) Power supply

DC: No power source  
S: Built-in power supply type  
A: AC adapter type

### 3) Paper width

3: 3 inch (80/83 mm)  
2: 2 inch (58/60 mm)

### 4) Interface

PA: Parallel  
RS: Serial RS-232C  
UB: USB only  
UH: USB with hub

### 5) Market:

J: Japanese  
E: Europe/Asia  
U: North America  
C: China

### 6) Body case color

WH: White  
BK: Black  
GR: Gray

### 7) PNE sensor

No  
P: PNE sensor

### 7) Label

No  
L: Label type

### 6) Black Mark sensor

No  
M1: Left side  
M2: Right side