

CITIZEN



CT-S651II
(Also available with a white case)

Well protected

Front paper exit perfect for hospitality

Greyscale Printing

Print up to 16 shades of grey to create clear yet subtle company logos on receipts and feint watermarks behind text.

SpillShield™ design

Front exit and curved top case helps stop drinks and other liquids dripping inside the printer mechanism.

Tool-free maintenance

The self-retracting cutter clears paper jams automatically. But should the long-life cutter need to be replaced, no tools are needed and it takes just 30 seconds to clip-in a new one

Internal Power Supply

The CT-S651II offers an internal power supply as standard or powered USB options.

CITIZEN CT-S651II

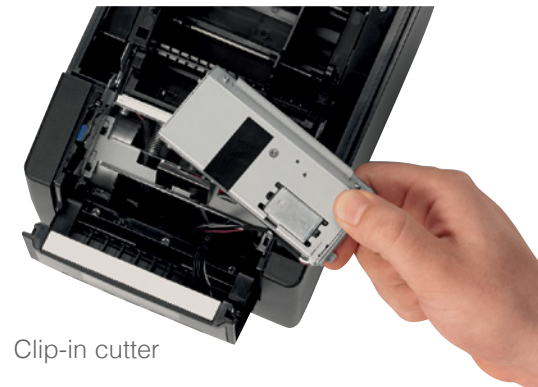
POS

Applications

- Hospitality
- Receipts
- Kitchen Orders
- Restaurants and Bars
- Coupons
- Kiosks
- Ticketing



Front paper exit



Clip-in cutter

Hi end models of the CT-S800er series with top exit and LCD panel models also available



CITIZEN

Interface Options

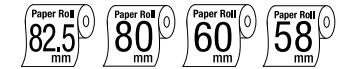
- USB
- Serial RS232
- Ethernet LAN
- Wireless LAN
- Bluetooth® (MFi)
- Powered USB
- USB with Hub
- Parallel



Exchangeable interfaces plus cash drawer kick-out

CITIZEN CT-S651II

POS

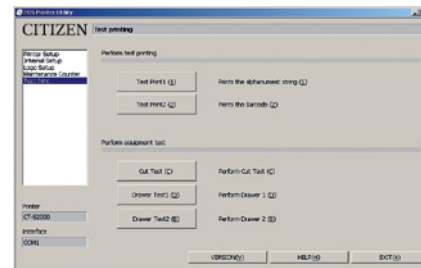
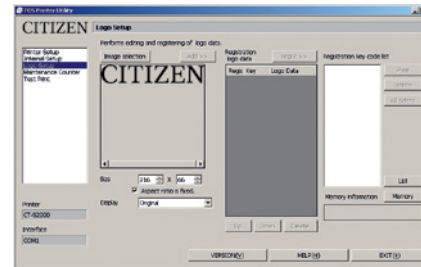
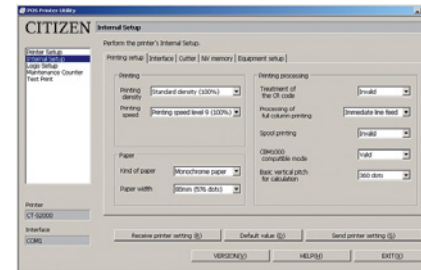


Specifications

Model	CT-S651II	
Printing method	Line thermal dot printing	
Printing width	Max 80 mm: 80, 72, 68, 64, 54, 52, 48, 45mm selectable Max 640 dots: 640 to 360 dots	
Dot pitch	8 x 8 dots/mm (203 dpi)	
Printing speed	220 mm / second maximum (at 100% print darkness)	
Number of columns	82.5mm paper: Font A=53, font B=71 & font C=80 columns 80mm paper: 48, 64 & 72 58mm paper: 35, 46 & 52	
Character size	Font A: 1.50 x 3.00mm (12 x 24 dots), Font B: 1.13 x 2.13mm (9 x 17 dots), Font C: 1.00 x 2.00mm (8 x 16 dots)	
Character table	Alphanumeric, international, PC437, 850, 852, 857, 858, 860, 863, 864, 865, 866, WPC1252, katakana, Thai code 18	
Barcode type	UPC-A/E, JAN-13/8, Code 39, Code 128, CODABAR, Code 93, PDF417, QR Code	
Logo registration/print	384 KB (capable of storing user-defined characters and logos)	
Line spacing	4.23mm (1/6 inch), can be set by command	
Paper	Width	82.5mm / 80mm / 60mm / 58mm (all +0/-1mm)
	Roll size	Maximum 83mm diameter
	Thickness	65-75 µm (core OD 18mm) 75-150 µm (core OD 32mm)
	Recommended Paper	TF-50KS-E-2D from Nippon Paper, PD150R or PD160R from Ohji Paper, PA220AG, HP220A, HP220AB-1, F230AA, P220AB, or PB670 (2-color paper) from Mitsubishi Paper
Interface options	Serial, parallel (IEEE 1284), USB, USB with hub, Ethernet, Wireless LAN (Wifi), powered USB, Bluetooth®	
Input buffer	4K bytes/45 bytes	
Drawer kick-out	2 drawers	
Operation panel	3 LEDs (Power, Paper, Error) and Feed key	
Power supply	With AC adapter: 110 to 240 VAC, 50/60Hz. 3W in standby mode Output (or DC variant): 24VDC, 2.1A	
Weight	2.0 kg with internal AC adapter. 1.6 kg for DC version	
Dimensions (W x D x H)	145 (W) x 192 (D) mm. 148mm high with AC adapter. 120mm high DC version	
Operating environment	5 to 45°C, 10 to 90% RH (no condensation)	
Storage environment	-20 to 60°C, 10 to 90% RH (no condensation)	
Reliability	Print head: 150 Km or 200 million pulses. Cutter: 2 million cuts (With recommended papers and environmental conditions)	
EMC and safety standards	UL, C-UL, FCC Class A, TUV-Bauart, CE Marking, VCCI, CCC, BIS	
Warranty	2 years for printer and print head subject to normal usage conditions	

All product names are trademarks of the respective manufacturers. Epson® and ESC/POS™ are trademarks or registered trademarks of Seiko Epson Corporation. Bluetooth® is a registered trademark of the Bluetooth SIG and WiFi is the registered trademark of the Wi-Fi Alliance Designs, specifications and availability are subject to change without notice. Errors and omissions excluded.

Customization Software



Features & Benefits

- 220mm/sec high-speed printing
- 82.5, 80, 60 & 58 mm paper widths
- Easy, drop-in paper loading
- Auto retracting full & partial cutter
- Front paper exit
- Grayscale printing: 16 shades
- Tool-free cutter servicing
- Built-in buzzer
- Paper roll capacity Ø 83mm
- Exchangeable interface cards
- Built-in AC adaptor or DC & powered USB models
- Cash drawer kick-out
- Logo and font download and storage
- 1D and 2D internal barcodes
- ESC/POS™ compatibility
- Available in black or white
- Drivers, Layout Utilities and SDKs for Windows, Linux, macOS, Android, iOS, JavaPOS, OPOS and more